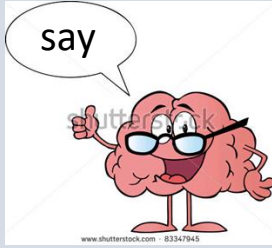


Connecting Games

For Families



1

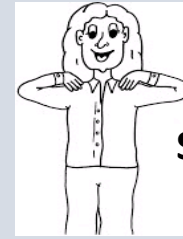
2

3



1

2



Shoulders

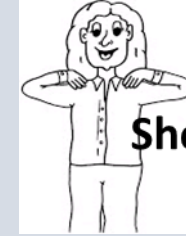


1

touch

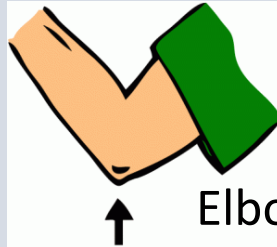


Head



Shoulders

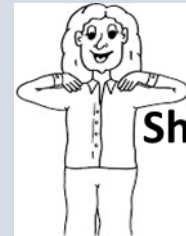
touch



Elbow



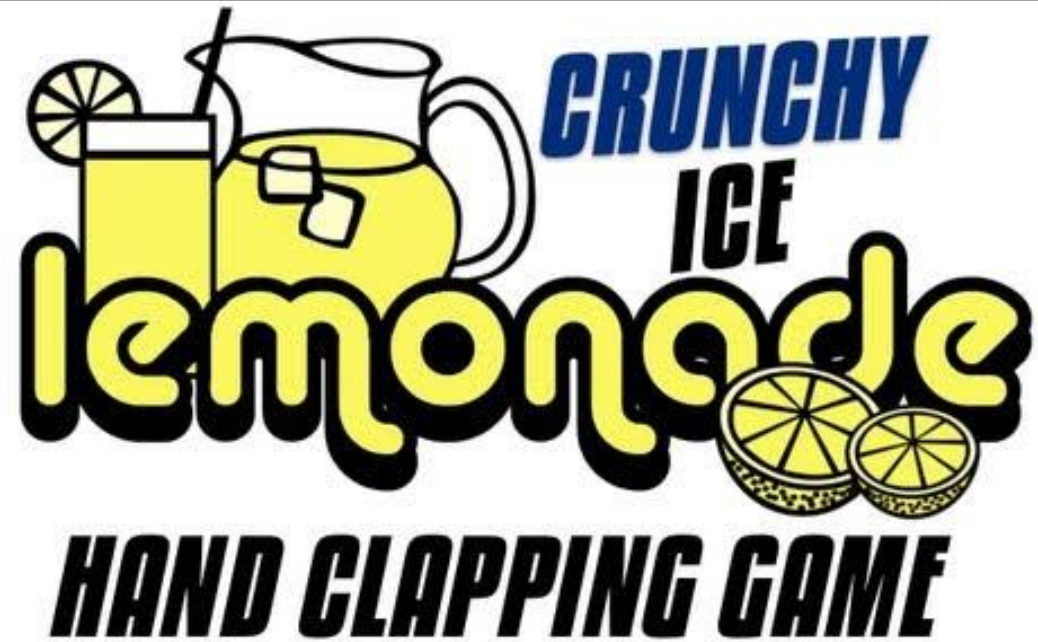
Head



Shoulders

Connecting Activity

- Lemonade, crunchy ice
- Beat it once, beat it twice.
- Lemonade, crunchy ice
- Beat it once, beat it twice.
- Turn around, touch the ground, FREEZE.



The Sailor

The sailor went to sea, sea, sea

To see what he could see, see, see

But all that he could see, see, see

Was the bottom of the deep blue sea, sea, sea



Connecting Activity

- Double Double This This
- Double Double That That
- Double This
- Double That
- Double Double This That



Add It Up

11 or 21

EF Practice:

- Activation, Focus, Memory, Action

Ages: 2nd -5th grade

Directions: It all adds up

- Group of 3
- On count of three throw the number of fingers from 0-5 out
- Add up group's number
- See how many times you can get the number 11
- With 2 hands the magic number is 23
- When finish high five that you did it 😊

